



Submission Date: 10 September 2008 at: 9:37

Questionnaire about Institutions partners

SECTION 1

Official name¹

¹ Provide the name of the organization such as the Ministry of Health or Public Health Institute to which your unit belongs.

Instituto de Salud Carlos III

Unit²

² Department/Unit within the institutions involved in the Network, in charge of the surveillance of communicable diseases (especially in early warning and response system, vaccine preventable diseases and zoonotic infections).

Early Warning and Response Unit, Area of Public Health Surveillance, Centro Nacional de Epidemiología

Phone

+34 918222646

Fax

+34 913877815

E-mail address

Oficina.informacion@isciii.es

Website address

www.isciii.es

EpiSouth Focal Points:

a) Institution

Centro Nacional de Epidemiología

E-mail

fsimon@isciii.es

b) Institution

E-mail

c) Institution

E-mail

SECTION 2

Mandate³ as described in the regulation enacting your organization

A maximum of 200 words is allowed

³ *The mandate defines the main functions of an organization and derives from outside and above an organization.*

SECTION 3

Describe your unit position within the organizational chart (organigram)⁴ of the larger institution you belong to

A maximum of 200 words is allowed

⁴ *An organizational chart for a whole organization shows the units who make up such organization and the relationships between them. Relationships refer to authority and communication lines.*

Upload a file for further informations:

SECTION 4

Describe your unit's organizational chart (organigram)⁵

A maximum of 200 words is allowed

⁵ *An organizational chart for a unit shows the managers and main professional roles who make up such unit and the relationships between them.*

SECTION 5

Illustrate the main roles and activities carried out by your organization in the field of infectious diseases prevention and control, specifically in the following areas:

a) Surveillance of infectious diseases

A maximum of 200 words is allowed

b) Epidemic Intelligence⁶

A maximum of 200 words is allowed

⁶ *Please, see: C. Paquet, D. Coulombier, R. Kaiser, M. Ciotti, Epidemic Intelligence: a new framework for strengthening disease surveillance in Europe in Eurosurveillance, 2006; 11 (12): 212–4.*

c) Monitoring of services delivery, including immunization of migrant populations

A maximum of 200 words is allowed

d) Zoonosis

Coordination of the National Surveillance Network. Health information systems, epidemiology and control of communicable, immunological and chronic diseases. Microbiology, virology and immunology. Research on health including clinical, reproductive health and genetic research. Training of public health professionals.

Attached file includes the structure of the Instituto de Salud Carlos III (ISCIII) and of the Centro Nacional de Epidemiología. The Centro Nacional de Epidemiología is part of the ISCIII but also has a direct functional link with the General Directorate of Public Health at the Ministry of Health.

Detailed informations are available in the organigram attached

The Early Warning and response Unit is an horizontal Unit coordinating with all other Units within the Centro Nacional de Epidemiología and with the Centro Nacional de Microbiología and with a direct functional link with the Director of the Centre. There is a Head of the Unit and two full-time epidemiologists working at the unit. Professionals from other units and part-time involved in the unit's activities. On top of that there are 3 more professionals engaged for specific tasks in projects coordinated by the unit. The task force of the unit are the participants in the Field Epidemiology Training Programme (around 12 epidemiologists available) and 4 residents of public health participating part time in the unit activities.

The Centro Nacional de Epidemiología is the coordinator of the National Surveillance Network. Mandatory Notifiable Diseases, the Microbiological Information System, specific registers and the Alert Notification System of the Network are coordinated by the centre. Specific surveillance systems have been developed by the unit for increasing the sensitivity of the network for detecting signals susceptible of becoming health alerts. The centre is in charge of international issues and relationships together with the Ministry of Health.

The Unit develop specific surveillance system for improving sensitivity and opportunity of detection. Syndromic surveillance systems and Epidemic Intelligence are among the daily tasks of the unit.

The Centro Nacional de Epidemiología is a technical institute giving technical advise but in Spain, control measures are implemented by regional authorities. In supraregional situations control measures are implemented by the Ministry of Health

Surveillance, evaluation and recommendations

A maximum of 200 words is allowed

e) Diagnostic services

A maximum of 200 words is allowed

f) Emergency preparedness

A maximum of 200 words is allowed

g) Training and education

A maximum of 200 words is allowed

h) Research

A maximum of 200 words is allowed

SECTION 6

Describe the alert procedure adopted by your organization and the conditions to which applies paying special attention to infectious diseases.

A maximum of 200 words is allowed

SECTION 7

Provide a brief account of your unit's professional staff mix⁷

⁷ *The categories are mutually exclusive: please, assign only one profile to each unit's professional staff.*

Staff mix	Senior	Junior	Total
Epidemiologists	<i>2</i>	<i>0</i>	<i>2</i>
Infectious diseases specialists	<i>0</i>	<i>0</i>	<i>0</i>
Statisticians	<i>1</i>	<i>0</i>	<i>1</i>
Microbiologists	<i>0</i>	<i>0</i>	<i>0</i>
Biologists	<i>0</i>	<i>0</i>	<i>0</i>
Laboratory technicians	<i>0</i>	<i>0</i>	<i>0</i>
Information Technology Managers	<i>1</i>	<i>0</i>	<i>1</i>

None

Development of Guidelines, integration in response teams and advisory committees, investigation and communication

Responsible of training in epidemiology at the National School of Public Health. Updating training for public health professionals at regional level. Participation in international training courses for WHO, ECDC, Spanish Development Agency, specific countries and other institutions. Field Epidemiology Training Programme.

The unit is involved in several research lines alone and in coordination with other units at the centre and other institution at national and international level. Main research lines are: risk factors for infectious diseases, development of epidemiological and statistical methods for disease surveillance.

Once an event is detected or received at the National Center of Epidemiology (CNE) the Alert and response unit together with the specific disease expert assess the risk it may pose to public health. If the disease is considered of supralocal interest, the information is transmitted to all autonomous regions and to health authorities at the Ministry. First investigations are coordinated by the CNE and communication and coordination at international level is done steered together with the ministry of health. Microbiological aspects are dealt at the corresponding unit at the National Center of Microbiology. General protocols for specific "high risk" diseases and generic preparedness are available.

Others (please, specify)

0

0

0

SECTION 8

Describe the content of and time span covered by the databases related to infectious diseases your organization manages.

Please select the number of databases you want to describe, insert their descriptions, and leave the drop-down menu with the number of databases you have compiled.

Number of databases:

4

Data-base	Content	Time span	Brief description
-----------	---------	-----------	-------------------

Mandatory notifiable diseases	Epidemiological and lab information about mandatory notifiable diseases	Electronic format since 1964	Information fulfilling case definitions of the surveillance protocols
Outbreaks data base	Information about all outbreaks registered at the Autonomous Regions.	Since 1995	Final report of all outbreaks detected at local level by the autonomous regions and sent to the CNE is included in this data base
Microbiological information System	Lab data about pathogens detected in laboratories.	Since 1995	Recives weekly reports from laboratories including all pathogens isolated or detected.
Daily Mortality Monitoring System	Daily general mortality by age, sex, municipality, and other variables	Since 2004	Original objective was to evaluate the impact of high temperatures on health, currently is working all the year round.

SECTION 9

Exemplify the main publications produced by your organization during the last three years.

Please select the number of publications you want to describe, insert their descriptions, and leave the drop-down menu with the number of publications you have compiled.

Number of newsletters:

0

Number of bulletins:

0

Number of reports:

0

Number of research:

0

Others:

0

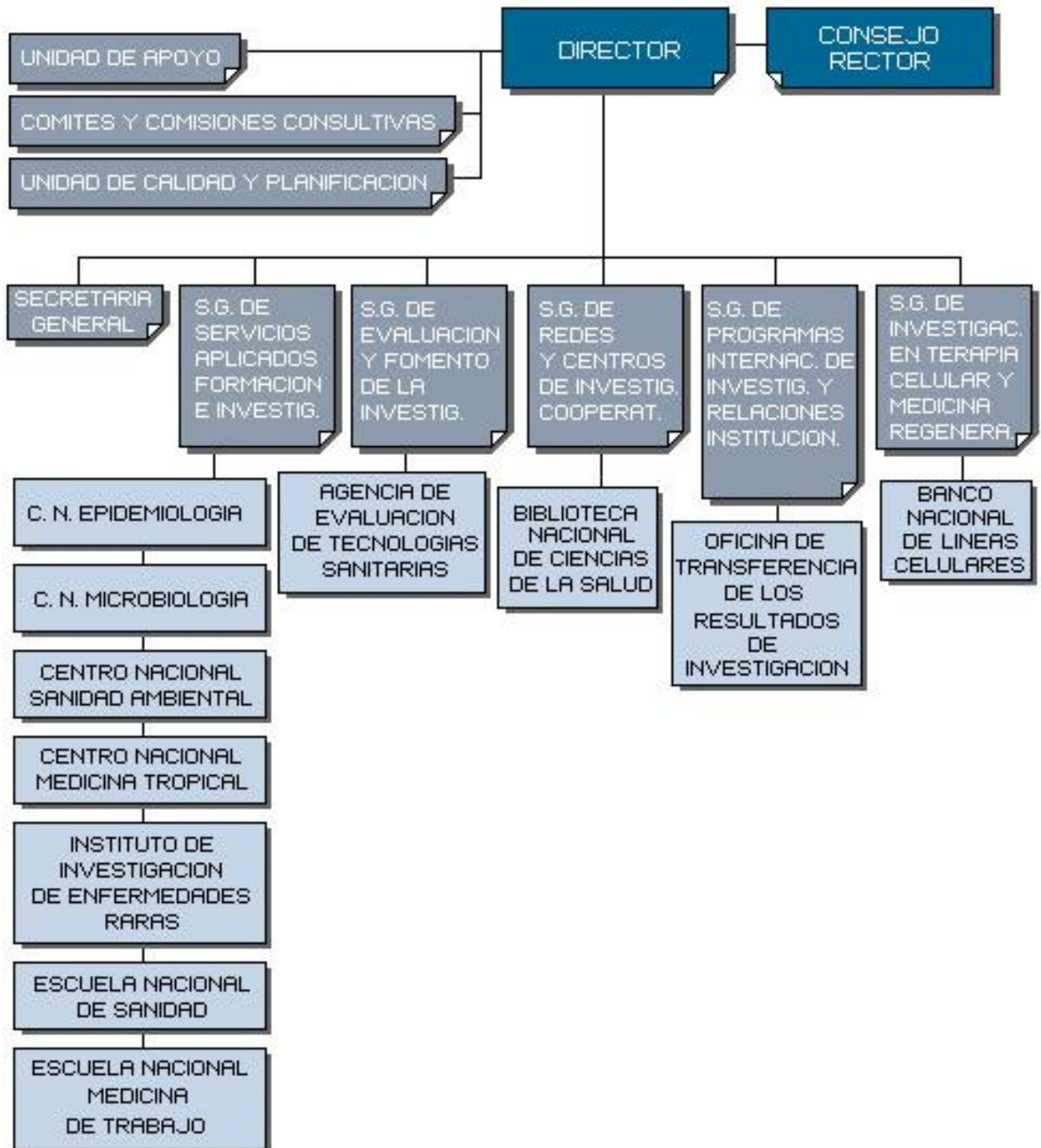
SECTION 10

Identify your main collaborating partners in each area.

Number of partners:

0

Structure of the Instituto de Salud Carlos III



National Centre of Epidemiology

